



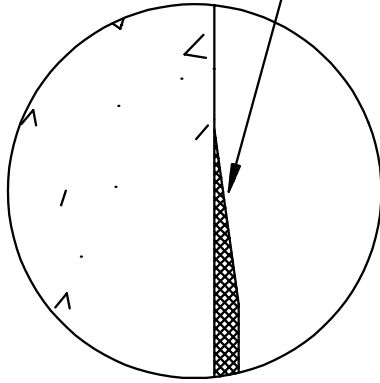
Typical Installation Details



Craftsmanship ♦ Technology ♦ Service

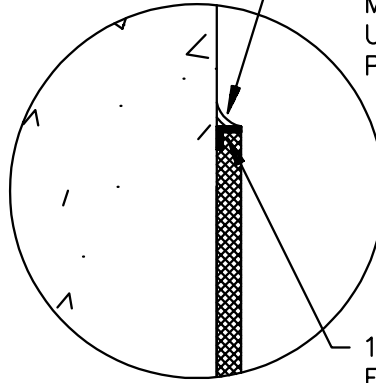
SeamTek® Details

EPOXY COVE BASE
FEATHERED EDGE



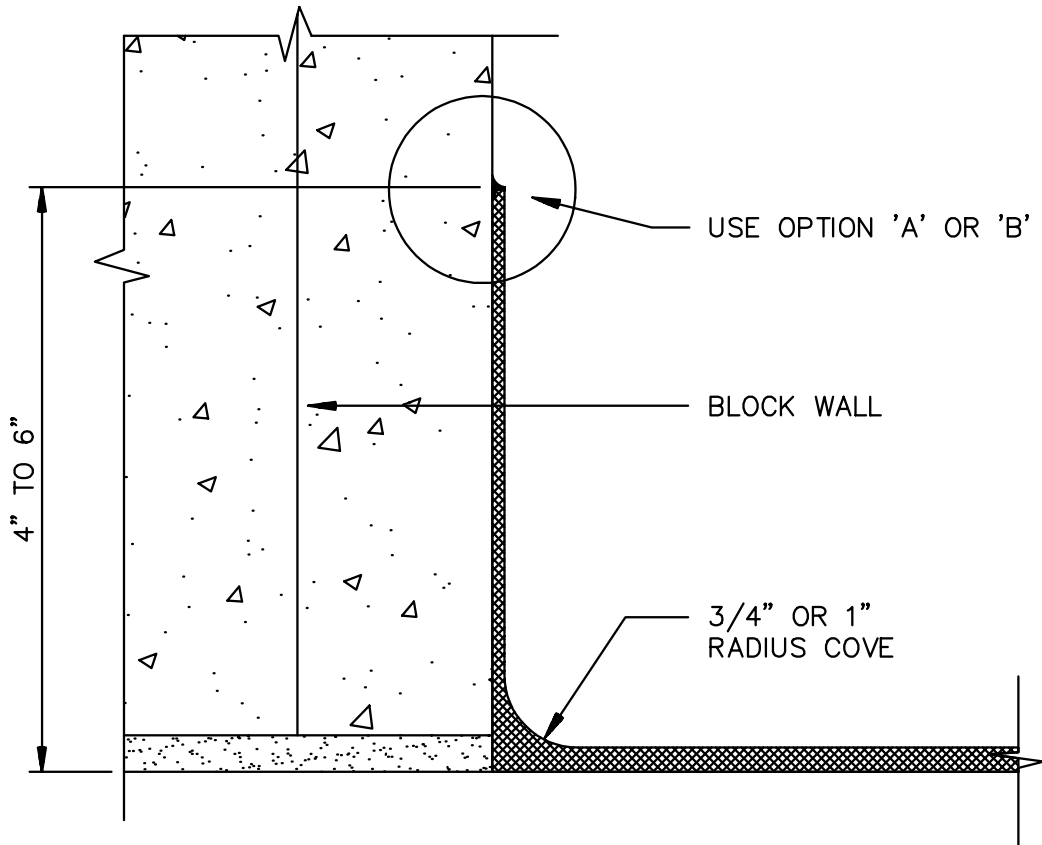
OPTION 'A'

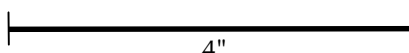
SANITARY SEALANT
(BY OTHERS) FOR BOTH
BATHROOM LOCKERS AND
MEDICAL INSTALLATIONS
USDA APPROVAL FOR FOOD
PROCESSING AND PREPARATION



OPTION 'B'

1/8" METAL/PLASTIC
EDGE TERMINATION



Detail: <h2>COVE BASE OVER CMU</h2>	Project:	Project #:
		Date:
Scale: 6" = 1'0" 		Drawing Name: COVECMU.DOC