



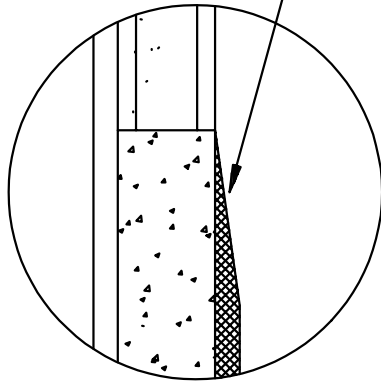
Typical Installation Details



Craftsmanship ♦ Technology ♦ Service

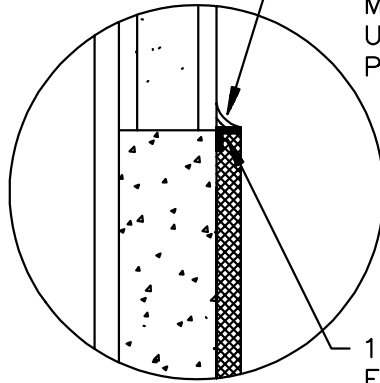
SeamTek® Details

EPOXY COVE BASE
FEATHERED EDGE



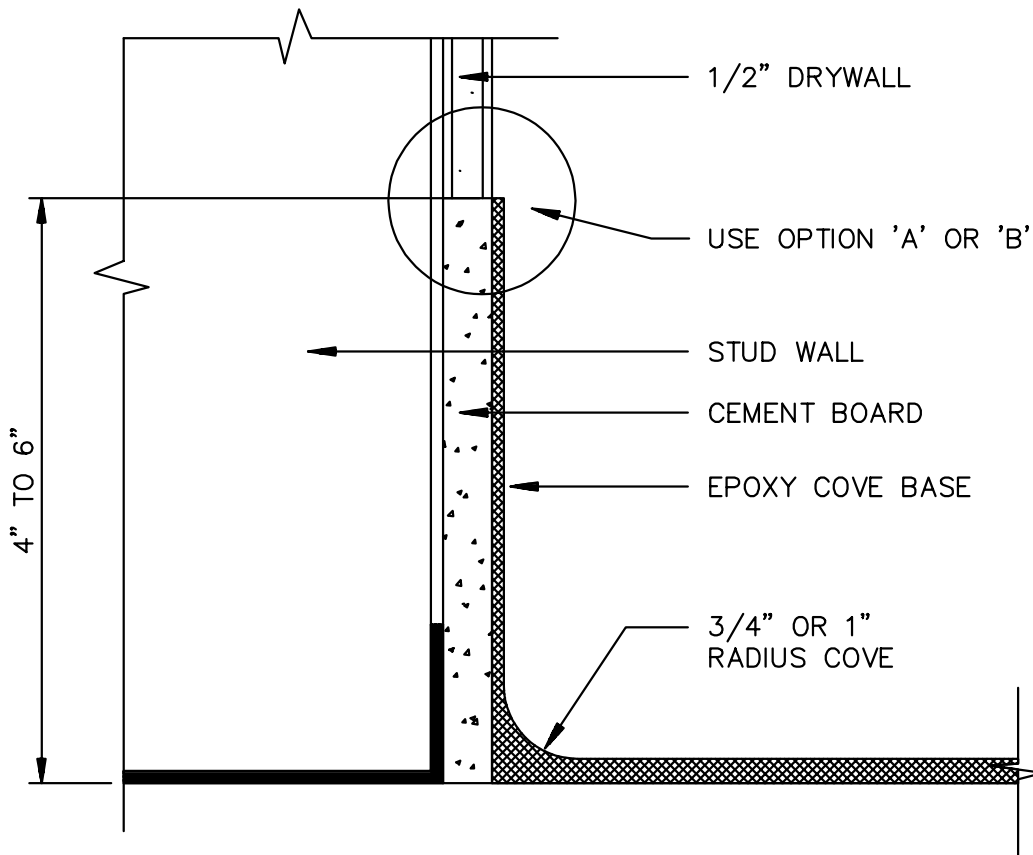
OPTION 'A'

SANITARY SEALANT
(BY OTHERS) FOR BOTH
BATHROOM LOCKERS AND
MEDICAL INSTALLATIONS
USDA APPROVAL FOR FOOD
PROCESSING AND PREPARATION



OPTION 'B'

1/8" METAL/PLASTIC
EDGE TERMINATION



1/2" DRYWALL

USE OPTION 'A' OR 'B'

STUD WALL

CEMENT BOARD

EPOXY COVE BASE

3/4" OR 1"
RADIUS COVE

Detail:

COVE BASE @ STUD WALL

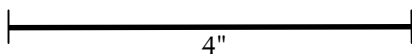
Project:

Project #:

Date:

Scale:

6" = 1'0"



Drawing Name:

COVESTUD.DOC